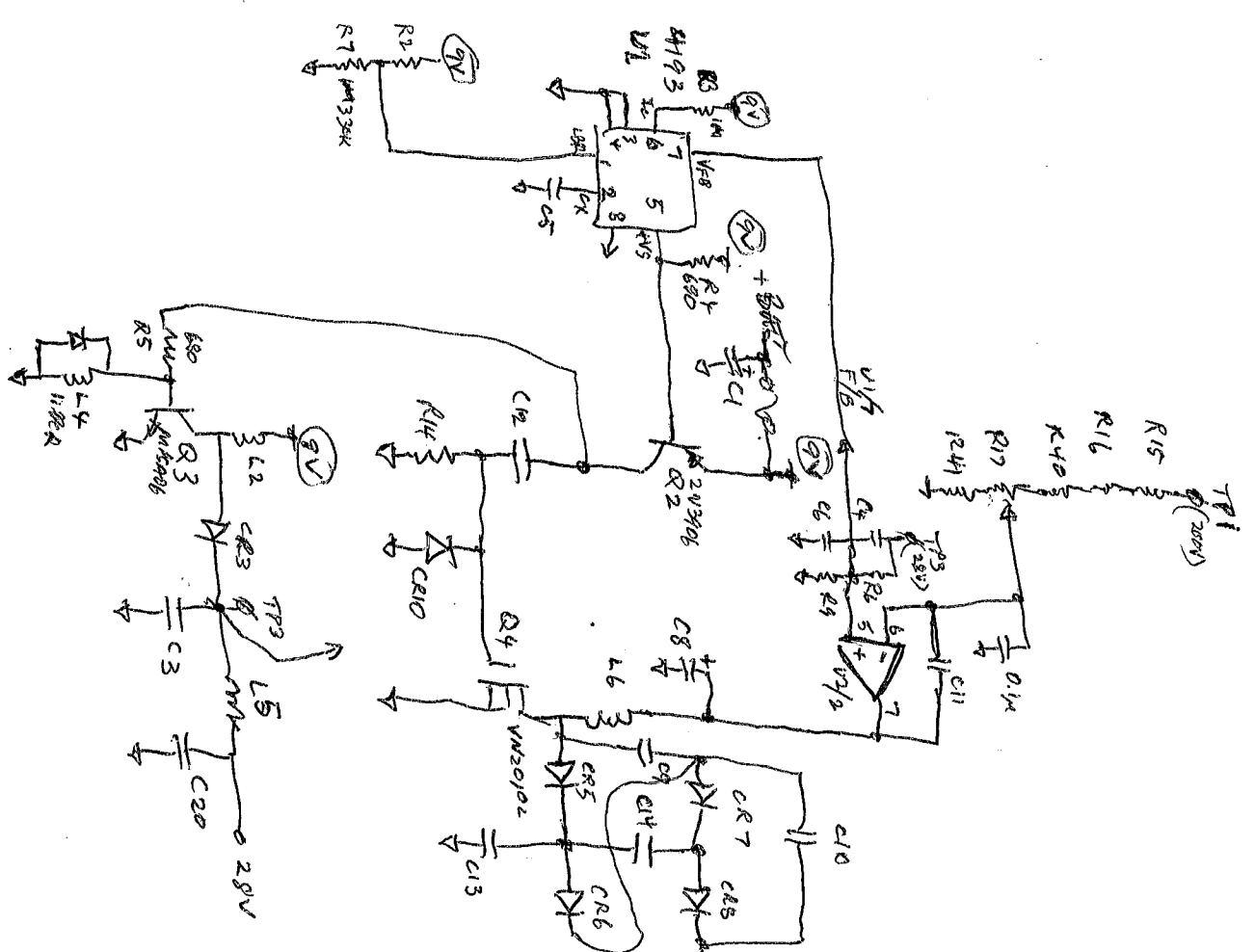


# ACOP 9200 XE INTERFACE

DUAL CHANNEL

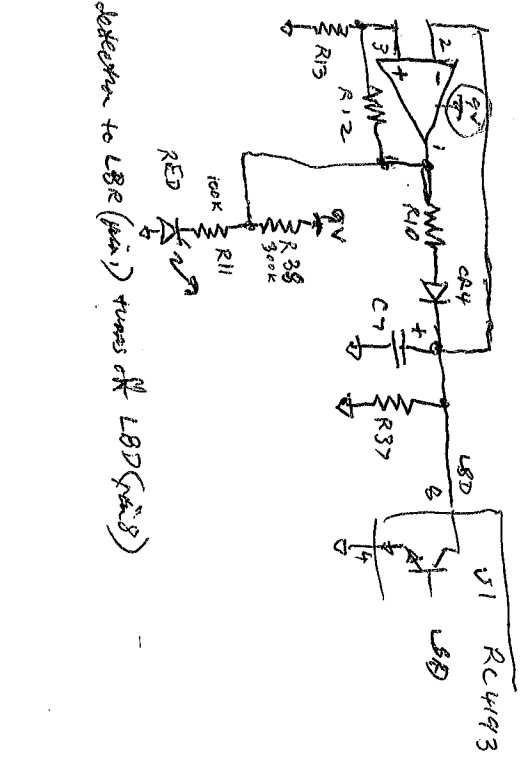
PCB SCHEMATIC



- TP1 200V
- TP2 0V
- TP3 28V

- 2W3906 PNP
- 5.82
- 5.82

- U1 RC4193N SWITCHING RATE
- U2 MC33172P DUAL OFFRAMP



9V supply detector to L8E (pin) turns on L8D (pins)